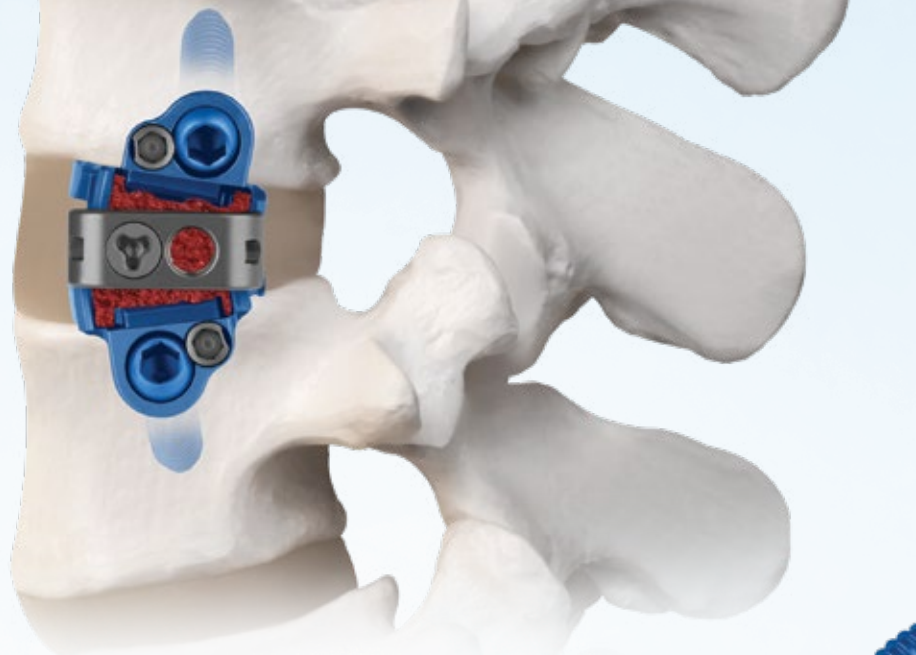




GLOBUS
MEDICAL



ELSA[®]

Expandable Integrated
Lateral Interbody Spacer

ELSA[®]

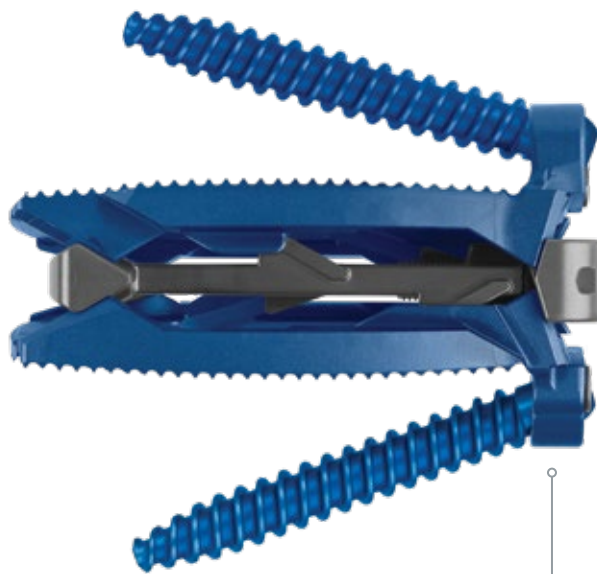
EXPANDABLE INTEGRATED LATERAL INTERBODY SPACER

ELSA[®] is an expandable lateral interbody fusion spacer with integrated fixation designed to maximize segmental lordosis while minimizing disruption to patient anatomy.

Minimized Insertion Height



Robust Titanium Body



Up to 9mm of Height Expansion
and 15° of Adjustable Lordosis

Integrated Fixation*



Large Continuous Graft Chamber

In-Situ Graft Delivery

*Supplemental fixation also required.

SAGITTAL ALIGNMENT

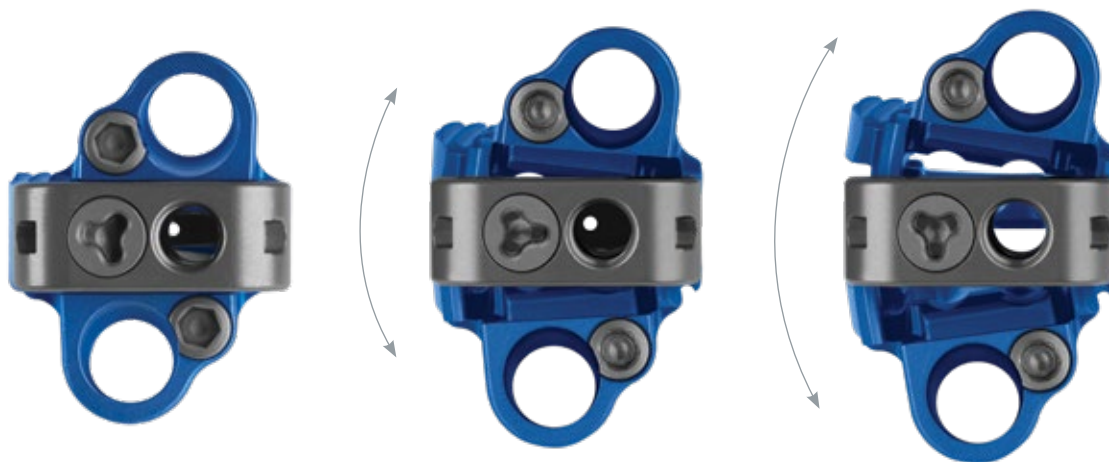
Expansion capability allows integrated fixation to be delivered through a smaller access window than traditional lateral fixation.



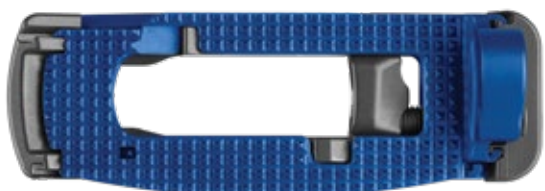
Insertion

Expansion

Adjustable lordosis allows for sagittal balance correction at a smaller starting height without pre-determining lordosis.



COMPREHENSIVE IMPLANT OFFERINGS



ELSA® Spacer

- Sagittal profiles: 0° and 6°
- Expansion ranges: 7-14mm, 8-15mm, 6° lordotic, and 10-17mm
- Lengths: 40-65mm, in 5mm increments
- Width: 20mm



ELSA® Adjustable Lordosis

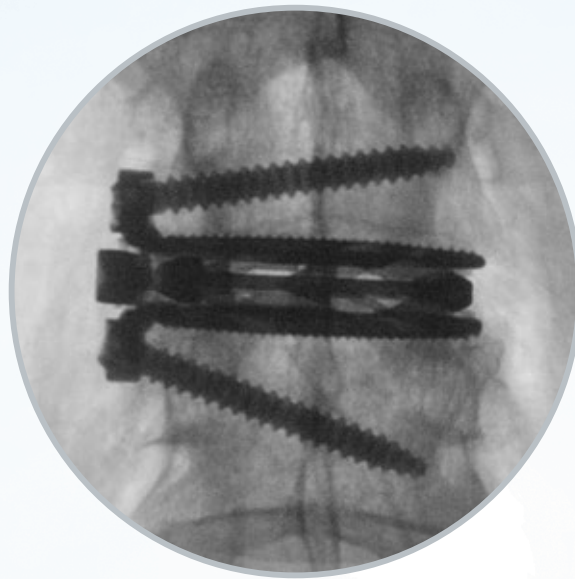
- Sagittal profiles: 5°-20° and 15°-30°
- Expansion ranges: 8-17mm, 5°-20° lordotic; or 11-20mm, 15°-30° lordotic
- Lengths: 40-65mm, in 5mm increments
- Width: 20mm



Screw Options

- Titanium bone screws
- Variable angled screws (0°-20°)
- Lengths: 30-60mm, in 5mm increments
- Diameter: 5.5mm
- Self-tapping and self-drilling
- Hydroxyapatite (HA) coated option

THE **ONLY** EXPANDABLE INTEGRATED LATERAL INTERBODY SPACER



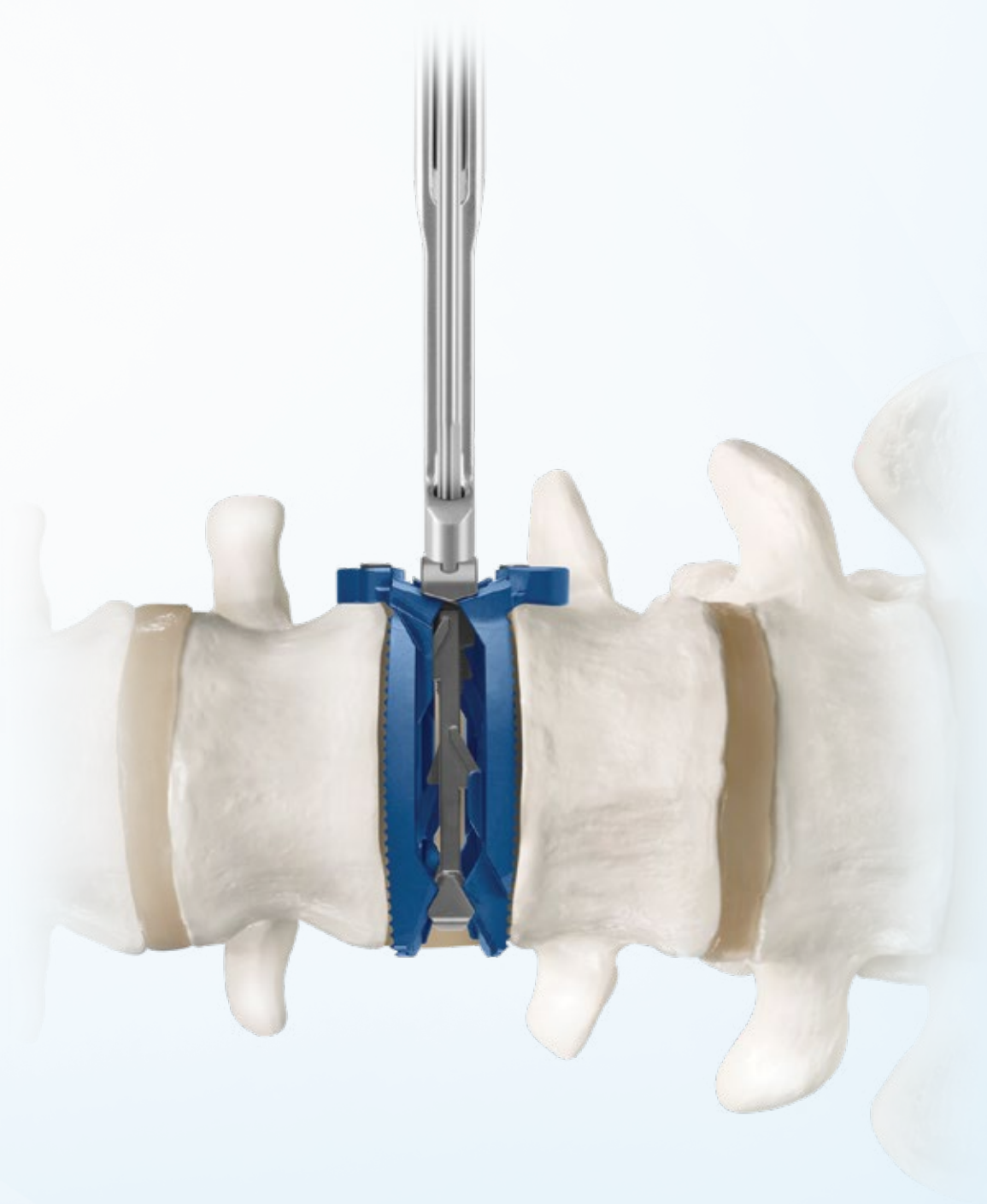
AP View

ELSA[®] allows for sagittal balance correction from the anterior column.



Lateral View

Screw insertion at the apophyseal ring helps to maximize screw purchase through cortical bone.
As the implant expands, the integrated screw eyelets maintain ideal placement and fit.



Globus Medical
Valley Forge Business Center
2560 General Armistead Avenue
Audubon, PA 19403
www.globusmedical.com

Customer Service:
Phone 1-866-GLOBUS1 (or 1-866-456-2871)
Fax 1-866-GLOBUS3 (or 1-866-456-2873)